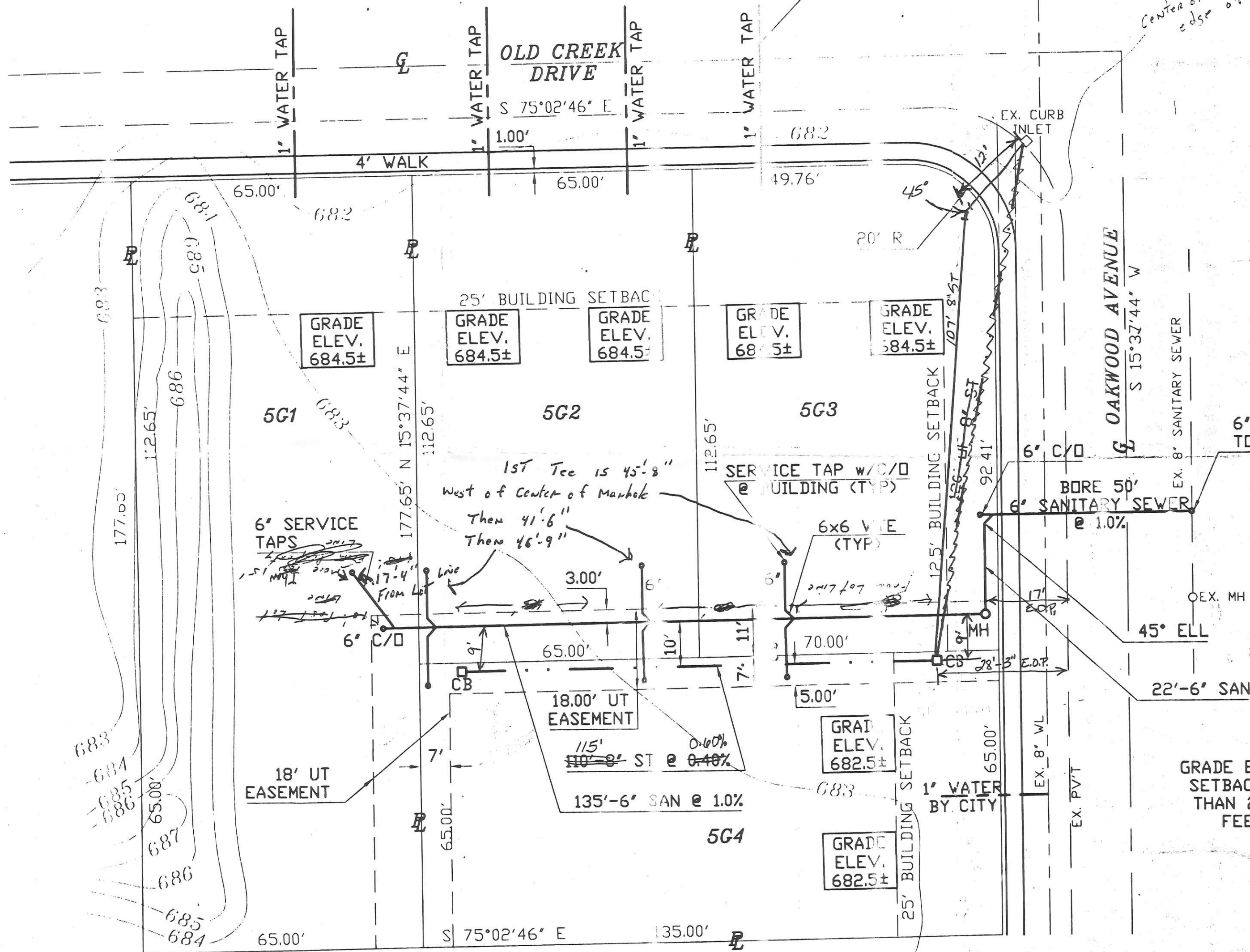


OLD CREEK SQUARE A SUBDIVISION OF LOT 5G SITE PLAN

BY CITY OF NAPOLEON



Electric & Gas is OK for Storm Sewer at Curb. & Whole Distance

Water Main is between sidewalk & Curb, may be in way of catch basin. Water main is on East side of Catch Basin out of way.

There should be no utilities in way of Storm Sewer.

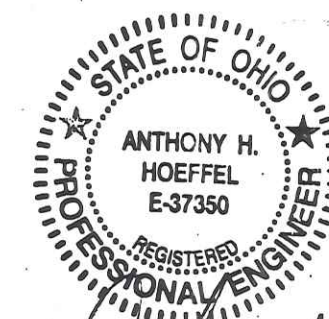
Stone - 13 Top 57-

Kieth Cell 579-0948

SCALE: 1"=20'

6" TAP & 6" RISER TO 7" BELOW GRADE

GRADE ELEVATION OF BUILDING AT SETBACK LINE NOT TO BE LESS THAN 2 FEET NOR MORE THAN 3 FEET ABOVE CURB GRADE.



Anthony H. Hoeffel

183 Old Creek Dr.

NOTES

ROOF DRAINS, FOUNDATION DRAINS, & OTHER CLEAN WATER CONNECTIONS TO THE SANITARY SEWER ARE PROHIBITED.

18" VERTICAL & 10' HORIZONTAL SEPARATION SHALL BE MAINTAINED BETWEEN WATER LINE & SANITARY SEWER.

OLD CREEK SQUARE SUBDIVISION OF LOT 5G

SITE PLAN

SCALE: 1"=20' DATE: 10/01/03 DWN BY: *AMM*

BRYAN ENGINEERING & SURVEYING
ANTHONY H. HOEFFEL
128 S. LYNN ST. BRYAN, OH 43506
1-419-636-2060

1
1

Can be 43" top at 1st Basin with 4" Fall on Tile

Cut Hole 41" from Top of Basin or 3" from floor of Basin to Bottom of hole

Cut Hole in 2nd basin 7" from Floor Bottom up to Bottom of hole

*12/28/03
12/28/03
12/28/03*

*3/1
5/3
1/31*